



# SLIDING GATE OPERATORS

SAFE, ROBUST AND RELIABLE



**TORMATIC®**  
Pure Drive

## TABLE OF CONTENTS

### OPERATORS FOR GATES // sliding gate operators

NovoGate	04 / 05
PowerSlide	06 / 07
C721	10 / 11
741 E Z16	12 / 13
844 ER Z16	14 / 15
Accessories	16 – 18

# NOVOGATE

## OPERATOR SOLUTION FOR GATES IN THE PRIVATE AREA

The 24 V operator NovoGate is undoubtedly an innovation in the field of sliding gate operators in the private area. It opens gates with a weight of up to 400 kg in a powerful and safe way and distinguishes itself by its extremely smooth running. The high-quality aluminum guide rail with tooth belt, the 24 V technology with integrated force monitoring and the easy menu navigation with its practical 3-button programming device will ensure quality, safety and technical equipment at the highest level.

TORMATIC SERIES



01

### Running way detection

The integrated running way detection makes it unnecessary to install a limit switch. The gate stop will be used as reference point.



02

### Intelligent accessories

The integrated 8.2 kΩ evaluation system will spare users the costly installation of electronic evaluation devices.



03

### Easy installation

The easy and fast 3-button programming makes it very comfortable for the user to set the operator. An assembly tool for the aluminum profile is included in the scope of delivery.



04

### Smooth running

The 24 V technology as well as the Soft Start and Soft Stop function will ensure an extremely smooth running. Beyond that the operator technology with a toothed belt, which is integrated in an aluminum profile, lay the foundations.

## AT A GLANCE

Electro-mechanical 24 V sliding gate operator

Suitable for sliding gates with a max. gate leaf width of 6.00 m and 400 kg gate leaf weight

For private areas

Available for 4 m or 6 m door width

Silent mode due to aluminum profile and toothed belt

Integrated force observation with obstacle detection

Automatic closing and partial opening adjustable

Electronical running way detection

## TECHNICAL DATA

Push & pull force 550 N

Supply voltage 230 V / 50 Hz

Working current 1 A

Operating voltage motor 24 V DC

Power consumption 280 W

Running speed 17 cm/sec.

Maximum gate leaf width 6.00 m

Maximum gate weight 400 kg

Radio control 433 MHz, KeeLoq rolling code

Gear Mechanical

Emergency release Integrated

Blocking Self locking

Connecting further safety features In open/closed position

End-stop cut-out Programmable

Further functions 8.2 kΩ, evaluation integrated

## THE SET

Sliding gate operator NovoGate (550 N) with integrated control unit

Mounting plate and toothed belt

4 m or 6 m aluminum profile

Hand transmitter MAX 43-2

Radio receiver



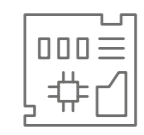
TORMATIC SERIES



# POWERSLIDE

OPERATOR SOLUTION FOR GATES IN THE PRIVATE AREA OR SMALL TRADE

This sliding gate operator is suitable for gates with a maximum gate weight of 900 kg. The operator is equipped with a 24 V motor with plate coupling and worm gear transmission, the latter running in an oil bath. The control is here directly integrated into the operator.



01

### Control unit

An obvious advantage – the integrated control unit 780 D. Radio systems can also be connected without any problems (optional: the pluggable radio receiver E43-I). Various operating logics, such as semi-automatic or automatic closing, can be set.



02

### Safety

With us you are safe: Just select light barriers and safety strips or encoders from our accessory program. The safety strips are operated via a separate evaluation device. Get in touch with us for information and advice.



03

### Power transmission

The power transmission is effected via the toothed belt and the gear wheel (module 4), stepless setting is possible. Soft Start and Soft Stop will ensure smooth braking.



04

### Running way detection

The electronic running way detection can be set via non-contact magnet end switches operated via the coupling.

## AT A GLANCE

- Electro-mechanical 24 V sliding gate operator

---

- Suitable for sliding gates with a max. gate leaf weight of 900 kg

---

- For private areas and small trade

---

- Partial opening adjustable

---

- Soft Start and Soft Stop

---

- Continuous adjustable double plate clutch walking in oil bath

---

- Integrated obstacle detection

---

- Programmable according to EN 12445 and EN 12453

## CE TECHNICAL DATA

Torque	20 Nm
Supply voltage	230 V / 50 Hz
Working current	1.5 A
Operating voltage motor	230 V
Power consumption	540 W
Running speed	12 m/min. (pinion Z16 module 4)
Maximum gate leaf width	N/A
Maximum gate weight	900 kg (600 kg on self-supporting doors)
Radio control	433 MHz, KeeLoq rolling code
Gear	Self-impending worm gear
Emergency release	Integrated
Blocking	Yes
Connecting further safety features	Yes
End-stop cut-out	Via magnets
Further functions	Start-up torque, brake, obstacle detection

## THE SET

- Electro-mechanical sliding gate operator

---

- Integrated control unit

---

- Hand transmitter MAX 43-2

---

- Radio receiver

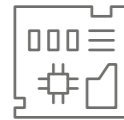




# C721

## OPERATOR SOLUTION FOR GATES IN THE PRIVATE AREA OR SMALL TRADE

This sliding gate operator is suitable for gates with a maximum weight of 800 kg. A 230 V motor with plate coupling and worm gear transmission is integrated, with the transmission running in an oil bath. The control is here directly integrated into the operator. The speed is adjustable.



### 01

#### Control unit

The control unit E 721 is directly integrated into the operator and makes it possible to be connected with radio systems. Soft Start and Soft Stop are here adjustable in the end positions.



### 02

#### Safety

Integrated safety through force-monitored movements. Light barriers and safety strips can be connected without any problems. The strips are operated via a separate evaluation device.



### 03

#### Power transmission

The cyclo drive with its mechanical locking system and the gear wheel (module 4) will ensure the power transmission.



### 04

#### Running way detection

The electronic running way detection can be set via non-contact magnet end switches operated via the coupling.

## AT A GLANCE

Electro-mechanical 24 V sliding gate operator

Suitable for sliding gates with a max. gate leaf weight of 800 kg

For private areas and small trade

Partial opening adjustable

Soft Start and Soft Stop in both end positions adjustable

Running speed can be adjusted

Integrated obstacle detection

## CE TECHNICAL DATA

Torque	30 Nm
Supply voltage	230 V / 50 Hz
Working current	10 A
Operating voltage motor	24 V DC
Power consumption	290 W
Running speed	8-18 m/min. (10 steps)
Maximum gate leaf width	N/A
Maximum gate weight	800 kg
Radio control	433 MHz, KeeLoq rolling code
Gear	Mechanical
Emergency release	Integrated
Blocking	Mechanical
Connecting further safety features	Yes
End-stop cut-out	Magnet limit switch integrated
Further functions	Automatic closing (AR)

## THE SET

Electro-mechanical sliding gate operator C721

Integrated control unit E 721

Cyclo gear

Pinion Z28 with toothed rack module 4

2 unlocking keys



# 741 E Z16

## OPERATOR SOLUTION FOR GATES IN THE PRIVATE AREA

This sliding gate operator is perfect for gates with a weight of up to 900 kg. It is equipped with an integrated control and an emergency release, the latter being operated via a turning handle.



### 01

#### Control unit

The control unit for sliding gate operators 740 D is set up for a radio receiver E43-I to be connected. Operating logics, such as semi-automatic and automatic closing, can be set with the help of the control. Soft Start, Soft Stop and braking.



### 02

#### Safety

A safety light barrier and safety strips can be connected with a separate evaluation device. Obstacle detection via encoder (optionally).



### 03

#### Power transmission

The power transmission is effected via the toothed belt and the gear wheel (module 4), stepless setting is possible. Soft Start and Soft Stop will ensure smooth braking.



### 04

#### Running way detection

The electronic running way detection can be set via non-contact magnet end switches operated via the coupling.

### AT A GLANCE

- Electro-mechanical 24 V sliding gate operator
- Suitable for sliding gates with a max. gate leaf weight of 900 kg
- For the private area
- Partial opening adjustable
- Soft Start and Soft Stop in both end positions adjustable
- Running speed can be adjusted
- Optionally:* obstacle detection via Encoder

### THE SET

- Electro-mechanical sliding gate operator 741E
- Integrated control unit 740 D
- Pinion Z16 with toothed rack module 4
- 2 keys for the emergency release
- Base plate
- Magnet limit switch

### CE TECHNICAL DATA

Torque	24 Nm
Supply voltage	230 V / 50 Hz
Working current	1.5 A
Operating voltage motor	230 V
Power consumption	540 W
Running speed	12 m/min.
Maximum gate leaf width	N/A
Maximum gate weight	900 kg
Radio control	433 MHz, KeeLoq rolling code
Gear	Self-impending worm gear
Emergency release	Via lockable trip lever
Blocking	Mechanical
Connecting further safety features	Yes
End-stop cut-out	Magnet limit switch integrated
Further functions	Automatic closing (AR), hold-to-run

# 844 ER Z16

## OPERATOR SOLUTION FOR GATES IN THE COMMERCIAL SECTOR

This sliding gate operator is suitable for door with a max. gate weight of 1800 kg. The 844 ER Z16 is equipped with an integrated control unit and an emergency release via lockable trip lever.



### 01

#### Control unit

The control unit 780 D for sliding gate operators is set up for the plug-in receiver E43-I to be connected. The settable partial opening is standard of this series. Functions: semi-automatic and automatic closing, braking.



### 02

#### Safety

With us you are safe: Just select light barriers and safety strips or encoders from our accessory program. The safety strips are operated via a separate evaluation device. Get in touch with us for information and advice.



### 03

#### Power transmission

The power transmission is effected via the toothed belt and the gear wheel (module 4), stepless setting is possible. Soft Start and Soft Stop will ensure smooth braking.



### 04

#### Long-lasting hydraulic system

As a result of its robust design, the 844 ER Z16 has a long service life and is particularly reliable.

### AT A GLANCE

Electro-mechanical 230 V sliding gate operator
Suitable for sliding gates with a max. gate weight of 1800 kg
For the commercial sector
Robust construction
Adjustable partial opening
Soft Start and Soft Stop
Continuous adjustable double plate clutch walking in oil-bath
Integrated obstacle detection

### CE TECHNICAL DATA

Torque	35 Nm
Supply voltage	230 V / 50 Hz
Working current	3.5 A
Operating voltage motor	230 V
Power consumption	650 W
Running speed	9.5 m/min.
Maximum gate leaf width	N/A
Maximum gate weight	1800 kg
Radio control	433 MHz, KeeLoq rolling code
Gear	Self-impending worm gear
Emergency release	Via lockable trip lever
Blocking	Mechanical
Connecting further safety features	Yes
End-stop cut-out	Magnet limit switch integrated
Further functions	Automatic closing (AR), hold-to-run

### THE SET

Electro-mechanical sliding gate operator 741 E
Integrated control unit 780 D
Pinion Z16 with toothed rack module 4
Lockable emergency release
Magnet limit switch

# THE EXTENSIVE ACCESSORY RANGE

HERE NOT ONLY HIGH REQUIREMENTS ON COMFORT AND SAFETY ARE MET BUT A PARTICULAR FOCUS IS ALSO PLACED ON DESIGN AND AESTHETICS. DISCOVER THE TRADITIONAL TORMATIC QUALITY ON WHICH YOU CAN RELY EVERY DAY OF YOUR LIFE.

## RADIO SYSTEMS



**Transmitter BLACK Remote**

3-channel transmitter, 433 MHz with KeeLoq rolling code, AES

201220-02-1-50



**Transmitter MAX 43-2**

2-channel transmitter, 433 MHz, with KeeLoq rolling code

020429-31-3-32



**Transmitter MAX 43-4**

4-channel transmitter, 433 MHz, with KeeLoq rolling code

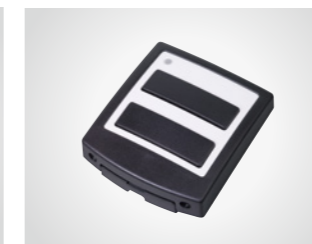
020431-31-3-32



**Push button DigiCode Premium**

Metal keyboard, 433 MHz, with KeeLoq rolling code

148710-40-1-50



**Push button DuoControl**

433 MHz, with KeeLoq rolling code

148740-40-1-50



**Receiver E43-1 and -2**

In housing, for KeeLoq, 1<sup>(2)</sup> respectively 2<sup>(2)</sup> relay outputs, records 99 codes

<sup>(1)</sup> 157251-01-1-50

<sup>(2)</sup> 157252-01-1-50



**Receiver E43-I**

Without housing, for KeeLoq and Multibit, 1 relay output, records 99 codes

157255-01-1-50

## SAFETY



**Light barrier LS 5F**

Extra 625, operating distance 8 m

020412-31-3-32



**Light barrier FAAC XP 15B**

2-wire BUS system, operating distance 15 m

020415-31-3-32



**Radio system light barrier XP20WD**

2-wire BUS system, 24 V, IP 54, operating distance 20 m, 24 V AC/DC, optic rotatable, wireless: optionally

020457-31-3-32



**Universal electric lock type SV XP20WD**

Prepared for profile half-cylinder

050509-31-3-32





**TORMATIC®**

Eisenhüttenweg 6  
44145 Dortmund / Germany

T +49 231 56602-0  
F +49 231 56602-23

[info@tormatic.de](mailto:info@tormatic.de)  
[www.tormatic.de](http://www.tormatic.de)

Subject to technical changes.  
WN 021150-45-5-32 / 03/2017