



Novoferm – Interior Doors and Frames
Just what you're looking for



Contents

Novoferm interior doors	3
Super-Standard, Super-Plus, Super-Dekor and Super-Color interior doors	4
Features of Novoferm interior doors	6
Window cutouts, accessories	7
Technical data and dimensions	8
Novoferm frames	9
Masonry frames	10
Stud wall frames	12
Technical data	14
Sills	16
A selection of your options	17
Features and preparation	18

Also suitable for use as a magnetic board



Novoferm interior doors

Novoferm interior doors for all areas of our lives and work

Four types of Novoferm steel interior doors are available to suit your very personal taste, together with a wide choice of decorative colour coatings and wood decors.

Novoferm interior doors are well known for their versatile applications. All types are available:

- with hinges to the left or right
- with optional window cutout
- with 1 or 2 leaves
- prepared for short plates or rosette plates
- with corner or wrap-around frame on request, single or 2-part frames; other frames are available on request, e.g. block frames

Novoferm interior doors – Perfect for both new construction and renovation projects

When building a new property, the numerous options and features leave virtually nothing to be desired. Novoferm offers door elements that are ready for installation, complete with top quality, sturdy frame options made of durable hot galvanized steel.

Renovation projects also provide a welcome opportunity to replace ageing doors once and for all with Novoferm products. Just hang a new door leaf and you're done. What makes this even more advantageous: If the floor is uneven or has been covered, you can easily shorten the leaf in the lower section of the U profile.

Flexible features give you enormous scope for design

A wide range of features and exclusive accessories provide huge scope for design. Window cutouts, beautifully designed handles or top quality glazings make your interior door individually unique.

Good reasons to opt for Novoferm interior doors

An interior door made by Novoferm incorporates the decades of experience and expertise of one of Europe's leading system providers and brand manufacturers.

Durable - top quality steel and hard-wearing, easy-to-clean surfaces.

Secure - double-walled door leaves with soundproofing and heat insulation, reliable and tight closing.



Our products comply with the various country-specific requirements and satisfy national standards and testing regulations.

We are ISO 9001 certified and produce in line with best engineering practice - ecologically compatible aspects included.

You have the choice

The design variants and versions that are available for you to choose from for your intended purpose are as numerous and diverse as your requirements.

What is more, you can obtain both complete door elements, consisting of door leaf, frame and handle, or individual door leaves and handles from Novoferm. Our overview shows you the available options.

Super-Standard interior doors

- **Door leaf:** 40 mm thick, rebate on 3 sides, made of hot galvanized sheet metal
- **Frame:** electroprimed corner frame with seal on 3 sides and complete set of hinges
- **Lock and hardware:** warded/profile cylinder lock with black round handle
- **Door surface:** galvanized



Super-Standard



Standard

Super-Plus interior doors

- Same features as Super-Standard but enhanced with:
- **Door surface:** Door surface: galvanized and primed with environmentally friendly powder coating, similar to RAL 9016, traffic white



Super-Plus



RAL 9016

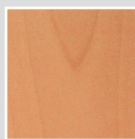
The door leaf can be supplied in different colours on each side

Super-Dekor interior doors

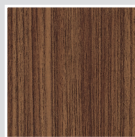
- Same features as Super-Standard but enhanced with:
- **Door surface:** galvanized and coated with plastic foil featuring a natural-look wood decor



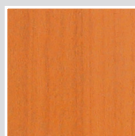
Super-Dekor (Natural beech)



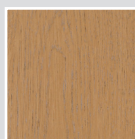
Pear



Walnut



Cherry



Light oak



Maple



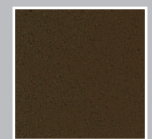
White ash

Super-Color interior doors

- Same features as Super-Standard
- Possible colours: Super-Color but enhanced with:
- **Door surface:** Door surface: galvanized and primed with environmentally friendly, textured powder coating (Standard colours and sizes available in stock, all other colours available on request)



Super-Color red, similar to RAL 3002



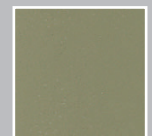
Super-Color sepia brown, similar to RAL 8014



Super-Color green, similar to RAL 6003



Super-Color platinum white, similar to RAL 9002



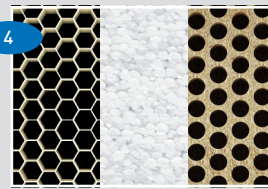
Super-Color yellow grey, similar to RAL 7034

The details that make the difference



Variable handle height
The handle height can be adjusted (850-1250 mm) to suit individual requirements, e.g. disabled access, schools, etc.

1050 mm



Honeycomb, polystyrene, tubular chip-board filling

The full-surface-bonded, close-mesh honeycomb filling ensures incomparable stability and absorbs any "tinny" knocking sounds. Optimized heat insulation and soundproofing are available in the form of polystyrene filling (U value = 1.0 W/mm²K as per DIN 52619) or classic tubular chipboard filling.

Quality design

Double-walled door leaves, 40 mm thick, rebate on 3 sides. This design not only looks good, it also makes the door outstandingly stable.



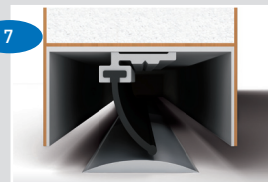
Door leaf can be shortened

The lower section of the door leaf can be shortened by up to 20 mm if the floor is uneven or new flooring has been laid.



Floor seal

An integrated floor seal that self-activates mechanically and lowers when the door is closed keeps out both cold air and noise.



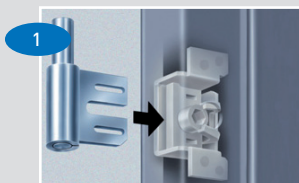
Acoustic threshold seal

An integrated acoustic threshold seal that engages with a 3 mm high aluminium profile when the door closes.



Thick rebate

The top quality rebate gives the door a homely character.



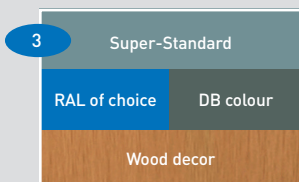
Mortar-tight hinge substructure

V8610/V8618 for plasterboard walls



Hinge and hinge pocket

Classic 2-part hinge, 3-part hinge (with hinge lock) optionally available, also available in stainless steel. Position and design of the hinge pocket comply with DIN 18111; it can therefore be easily replaced at any time. A third hinge can be ordered.



Surfaces

From Super-Standard to an RAL colour of your choice right up to wood decors.



Glazing

To look through or let the light in, round or square, any size and number you like. Versions include: Tempered safety glass (TSG), laminated safety glass (LSG), wire glass, Mastercarré, Masterligné or pre-assembled for on-site solutions. Glass holding strips made of aluminium, steel or wood. Further functional solutions, such as spyholes, letter slots, ventilation gratings, etc., are possible.



Handles

Novoferm offers designs ranging from classical to modern, handles can be retrofitted (version: warded lock or profile cylinder)



Frame seal

Our range of seals offers a choice of different closing pressures. They all reliably shut out draughts.



Do you need an even wider range of options?

Window cutouts to provide more light



Super-Color with window cutout 1



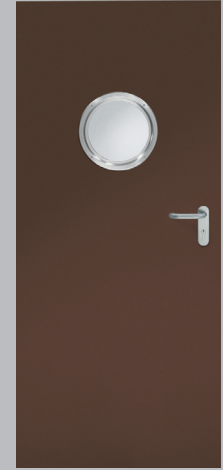
Super-Color with window cutout 2



Super-Color, RAL of choice (at additional cost) with cutout 3



Super-Dekor, natural beech, with cutout 4



Super-Color with round glazing and stainless steel handle (at additional cost)

And here are the matching accessories:

Standard handle, black	Standard hardware, profile cylinder with key optional or on-site cylinder	Standard hardware with warded lock clips, profile cylinder warded lock insert with key		
				
Handle, profile cylinder, aluminium	Knob lever, profile cylinder, aluminium	WC handle, profile cylinder, aluminium		
				
Handle, with rosette	Knob lever, with rosette	WC handle, with rosette		
				
Letter slot	Ventilation grating	Door closer	Electric opener	Floor seal
				

Interior door features and dimensions

Standard sizes					
	Coordinating sizes (CS) DIN 18100 (Order sizes) Width x height	Nominal sizes DIN 18100 Width x height	Clear passage dimensions DIN 18111 Width x height	Outer leaf dimensions DIN 18101 Width x height	Outer frame dimensions* for all standard frames Width x height
1-leaf	625 x 2000	635 x 2005	561 x 1968	610 x 1985	651 x 2043
	750 x 1875	760 x 1880	686 x 1843	735 x 1860	776 x 1918
	750 x 2000	760 x 2005	686 x 1968	735 x 1985	776 x 2043
	750 x 2125	760 x 2130	686 x 2093	735 x 2110	776 x 2168
	875 x 1875	885 x 1880	811 x 1843	860 x 1860	901 x 1918
	875 x 2000	885 x 2005	811 x 1968	860 x 1985	901 x 2043
	875 x 2125	885 x 2130	811 x 2093	860 x 2110	901 x 2168
	1000 x 1875	1010 x 1880	936 x 1843	985 x 1860	1026 x 1918
	1000 x 2000	1010 x 2005	936 x 1968	985 x 1985	1026 x 2043
	1000 x 2125	1010 x 2130	936 x 2093	985 x 2110	1026 x 2168
Super-Standard, Super-Plus: Special sizes available up to 1250 x 2500 mm. Super-Color and Classic: Special sizes available up to 1250 x 2250 mm. Super-Dekor: Special sizes available up to 1000 x 2125 mm. * Including floor recess 30 mm.					
2-leaf	1500 x 2000**	1510 x 2005	1436 x 1968	1485 x 1985	1526 x 2043
	1750 x 2000**	1760 x 2005	1686 x 1968	1735 x 1985	1776 x 2043
	2000 x 2000**	2010 x 2005	1936 x 1968	1985 x 1985	2026 x 2043
	2000 x 2125**	2010 x 2130	1936 x 2093	1985 x 2110	2026 x 2168
Super-Standard, Super-Plus: Special sizes available up to 2500 x 2500 mm. Super-Color and Classic: Special sizes available up to 2500 x 2250 mm. Super Dekor: Special sizes available up to 2000 x 2125 mm. * Including floor recess 30 mm. **divided in the middle					

All dimensions in mm.

Technical details

Engineering details of our interior doors

The technical details section includes the following diagrams:

- 1-leaf and 2-leaf elevation views:** Show door heights and widths. For 1-leaf, height is 1050 (standard) or 1435 (BRH 1875-2125) / 1360 (BRH 2126-2250). For 2-leaf, height is 1050 (standard). Widths are coordinated with height.
- Vertical section:** Shows nominal height, coordinating height, clear passage dimensions, and outer leaf/frame dimensions. Includes a 30mm floor recess and an 'OFF' label for the door bottom.
- Hinge details:** Shows 'Hinge DIN right' and 'DIN left' configurations.
- Width and floor details:** Shows nominal width, coordinating width, clear passage dimensions (37mm), and outer leaf/frame dimensions. Labels 'Inactive leaf' and 'Active leaf' are present for 2-leaf doors.
- Lower door seal options:**
 - Doors can be shortened in U-profile area (max. 20mm).
 - Lowerable floor seal (optional).
 - Acoustic threshold seal with half round sill (optional).

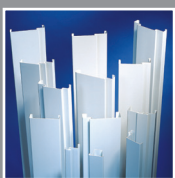
Novoferm frames

The frame of your choice

Novoferm doesn't just offer a wide choice of frames; it also has just the right frame for any specific type of wall.

What is more, our high quality standards ensure fast installation, together with high levels of stability and durability.

Sturdy Novoferm frames outlive various generations of doors.



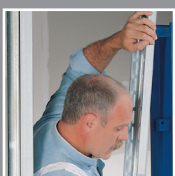
Diversity

Novoferm offers frames to suit any installation situation – stud walls, masonry and special conditions.



Durability

Novoferm frames are sturdy, dimensionally stable and protected against corrosion by hot galvanized thin metal sheets in accordance with EN 10142, sheet thickness 1.5 or 2.0 mm, with a top quality primer coat which provides the ideal base for a topcoat.



Dimensional accuracy

The exact profile shape and dimensional accuracy of Novoferm frames is assured by adhering to very narrow tolerance limits (EN/DIN standards / Novoferm in-house standards).



Doors, garage doors and frames directly from stock

Our new logistics centre stocks more than 1000 products, all manufactured at four production plants in Germany.



High-tech frame fabrication

1. Data are selected by barcode so mistakes are impossible
2. Products are marked by laser printer
3. Fully automated stamping process
4. Totally accurate fit



Express delivery

We can express deliver within just 4–7 days. In-stock products are designated as such.

A selection of your options

Novoferm masonry frames in 1 or 2 parts

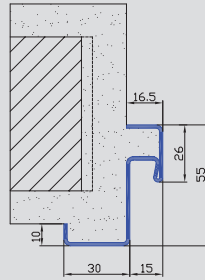
Reliably sturdy and enduring – the traditional approach to solid construction. Modern steel masonry frames made by Novoferm are just as sturdy – and a perfect fit for all doors.

Novoferm frames (as per DIN 18111) come in a range of variants and are fitted with special systems for mounting a wide variety of hinges.



Profile 21: Corner frame (EZS)

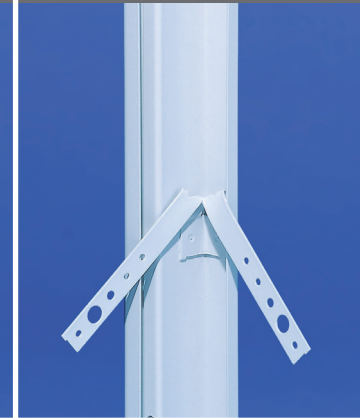
- For rebated doors
- With 30 mm floor recess
- With welded hinge pockets, mortar-tight, V8610 can be used L/R
- With 6 welded corner anchors
- Easy to install
- In-stock product



As delivered

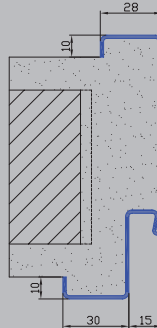


As installed



Profile 23: Wrap-around frame (UZS)

- For rebated doors
- With 30 mm floor recess
- With welded hinge pockets, mortar-tight, V 8610 can be used L/R
- Numerous possible applications
- In-stock product

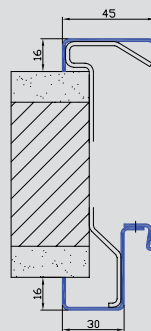


Speed anchor

- 8 anchors supplied loose
- Also available as joint anchors
- Fast, stable installation
- Technically sophisticated
- Individual positioning possible (note DIN!)

Profile 2140/1645: 2-skin frame (ZNG) for retrofitting

- For rebated doors
- Without floor recess
- With welded hinge pockets, V 8618 can be used L/R
- Fast and clean installation
- For retrofitting
- Concealed in the sealing groove
- Easy to dismantle and reuse
- Extremely stable



Fastening anchor

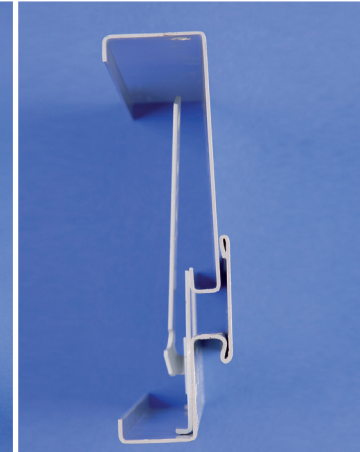
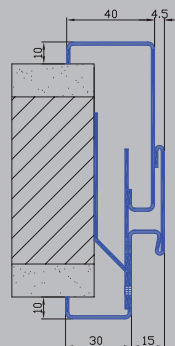
- Welded anchor for fastening the front skin
- For all wall types

Counter anchor

- For sturdy installation of the rear skin
- Securely protects against distortion of the rear skin

Profile 2150: 2-skinned frame, with opening width tolerance for masonry

- Variable opening widths -8/+10 mm
- All profile geometries possible (e. g. sliding-door frames running in front of the wall)
- With visible joint
- With corner anchors in the jamb



Novoferm stud wall frames in 1 or 2 parts

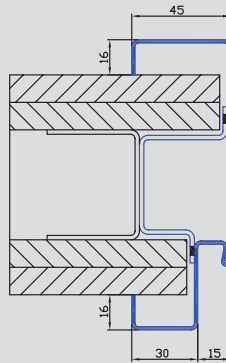
As life changes, so do our requirements in terms of living and working space. Which means we create new rooms and make continual improvements.

No problem whatsoever with Novoferm stud wall frames with their unique and fast, easy installation. Novoferm frames are classically strong, innovatively modern and particularly secure.



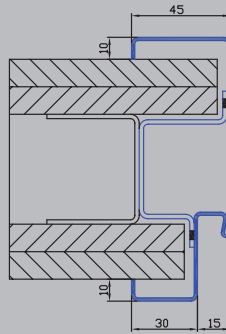
Profile 23/1645: Stud wall frame (ZGK)

- For rebated doors
- Standard version with 16 mm fold
- Without floor recess
- Hinge substructure V8618 can be used L/R
- With specially matched frame parts V8100/18 (not included in the scope of supply)
- No recess in the gypsum plasterboard
- With welded cap anchors, single or double planking possible
- In-stock product



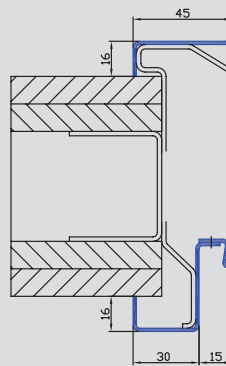
Profile 23/0045: Stud wall frame (ZGK)

- For rebated doors
- Conventional 10 mm fold, same appearance as the masonry frames
- Without floor recess
- Hinge substructure V8610 can be used L/R
- Notch required for hinge pockets and wall protection boxes
- With welded cap anchors, single or double planking possible
- In-stock product



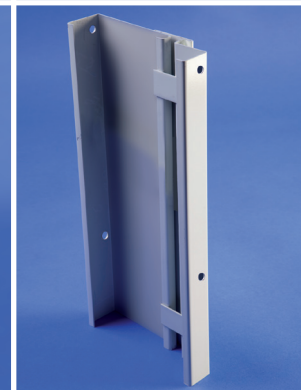
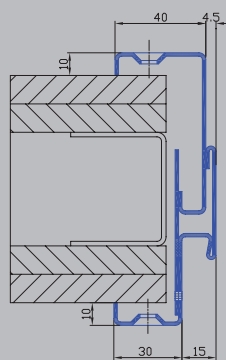
Profile 2140/1645: 2-skin frame for retrofitting

- For rebated doors, without floor recess
- Hinge substructure V8618 can be used L/R
- Fast and clean installation
- For retrofitting
- Concealed in the sealing groove
- Easy to dismantle and reuse
- Extremely stable
- In-stock product

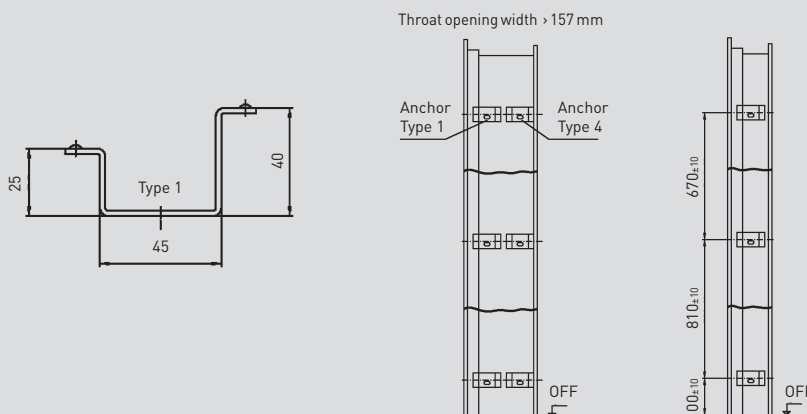


Profile 2150: 2-skinned frame, with opening width tolerance for stud walls

- Variable opening widths -8/+10 mm
- All profile geometries are possible
- With visible joint
- Dowel mounted in the frame facing

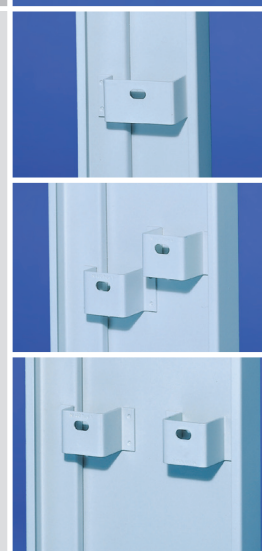


Anchor for stud walls



Stirrup anchor

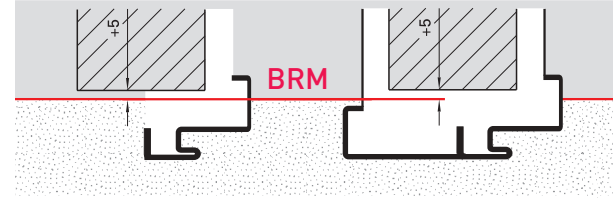
- Standard sizes single row
- Larger opening widths, arranged offset in two rows or next to each other



Technical data

Frames for masonry and concrete

- 1) Coordinating sizes and allocated dimensions are not included in DIN 18111
- 2) Standard only for corner frames
- 3) Not an in-stock product



Dimension table for Novoferm steel frames

Dimension table for Novoferm steel frames			Standard frames for masonry, gypsum wall and Ytong block structures	Standard frames for masonry, gypsum wall and Ytong block structures
Coordinating sizes (see DIN 18100)	Frame rebate dimensions (see DIN 18111)	Clear frame passage dimensions (see DIN 18111)	Nominal size of the wall opening Bare shell dimensions (RBM)	Nominal size of the wall opening Bare shell dimensions (RBM)
Width x height	Width x height	Width x height	Width x height	Width x height
750 x 1875 ^{1), 2)}	716 x 1858	686 x 1843	760 x 1880	760 x 1880
875 x 1875 ²⁾	841 x 1858	811 x 1843	885 x 1880	885 x 1880
1000 x 1875 ^{1), 2)}	966 x 1858	936 x 1843	1010 x 1880	1010 x 1880
625 x 2000	591 x 1983	561 x 1968	635 x 2005	635 x 2005
750 x 2000	716 x 1983	686 x 1968	760 x 2005	760 x 2005
875 x 2000	841 x 1983	811 x 1968	885 x 2005	885 x 2005
1000 x 2000	966 x 1983	936 x 1968	1010 x 2005	1010 x 2005
625 x 2125 ¹⁾	591 X 2108	561 X 2093	635 X 2130	635 X 2130
750 x 2125	716 X 2108	686 X 2093	760 X 2130	760 X 2130
875 x 2125	841 X 2108	811 X 2093	885 X 2130	885 X 2130
1000 x 2125	966 X 2108	936 X 2093	1010 X 2130	1010 X 2130
1125 x 2125 ^{1), 3)}	1091 X 2108	1061 X 2093	1135 X 2130	1135 X 2130
1250 x 2125 ^{1), 3)}	1216 X 2108	1188 X 2093	1260 X 2130	1260 X 2130

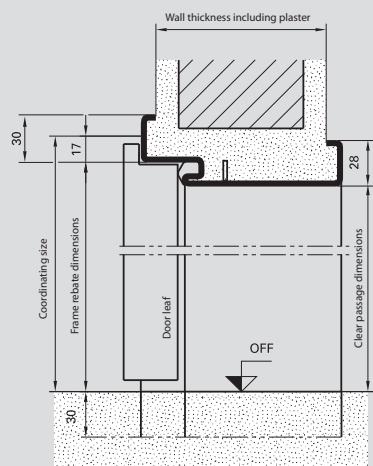
Hinge reference lines for rebate dimensions 1858-2108: 241 mm + 1435 mm as per DIN 18268

Masonry frames

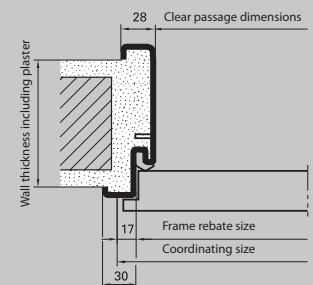
Opening widths

Opening widths		
Novoferm standard frames		
	for masonry	for gypsum walls
80	•	•
90	•	-
100	•	•
130	•	-
145	•	-
160	•	-
175	•	-
205	•	-
270	•	-
290	•	-
330	•	-

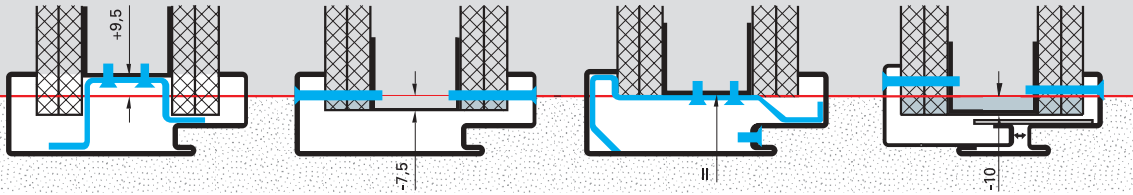
Vertical section Frame with header



Horizontal section Frame with wall Masonry



Frames for dry mortarless construction



Standard frames
for stud walls,
profile 23/1645

3-part disassembled
frame, profile 23/1645

2-part screwed
in the groove,
profile 2140/1645

2-part with joint,
profile 2150/0045

Please note
anchor position!
Installation during
wall construction

Specified wall opening
dimensions

Specified wall
opening dimensions
(= coordinating size)

Specified wall opening
dimensions

Outer leaf dimensions
(type dimensions,
see DIN 18101)

Width x height

769 x 1885
894 x 1885
1019 x 1885
644 x 2010
769 x 2010
894 x 2010
1019 x 2010
644 x 2135
769 x 2135
894 x 2135
1019 x 2135
1144 x 2135
1269 x 2135

Width x height

735 x 1870
860 x 1870
985 x 1870
610 x 1995
735 x 1995
860 x 1995
985 x 1995
610 x 2120
735 x 2120
860 x 2120
985 x 2120
1110 x 2120
1235 x 2120

Width x height

750 x 1875
875 x 1875
1000 x 1875
625 x 2000
750 x 2000
875 x 2000
1000 x 2000
625 x 2125
750 x 2125
875 x 2125
1000 x 2125
1125 x 2125
1250 x 2125

Width x height

730 x 1865
855 x 1865
980 x 1865
605 x 1990
730 x 1990
855 x 1990
980 x 1990
605 x 2115
730 x 2115
855 x 2115
980 x 2115
1105 x 2115
1230 x 2115

Width x height

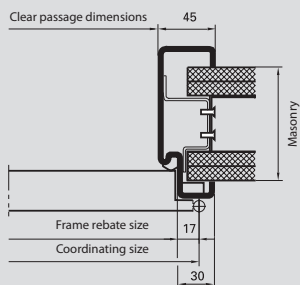
735 x 1860
860 x 1860
985 x 1860
610 x 1985
735 x 1985
860 x 1985
985 x 1985
610 x 2110
735 x 2110
860 x 2110
985 x 2110
1110 x 2110
1235 x 2110

No anchor in the headpiece

Stud wall frames

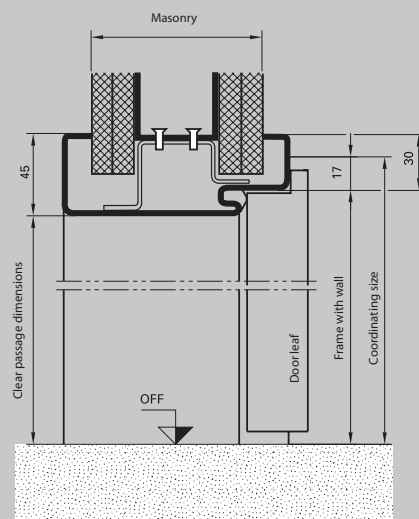
Horizontal section

Frame with wall
Masonry



Vertical section

Frame with header



Opening widths

Opening widths

for Novoferm
standard frames
(stud walls)

75

100

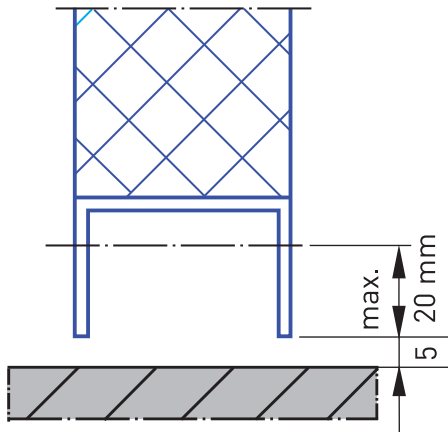
125

150

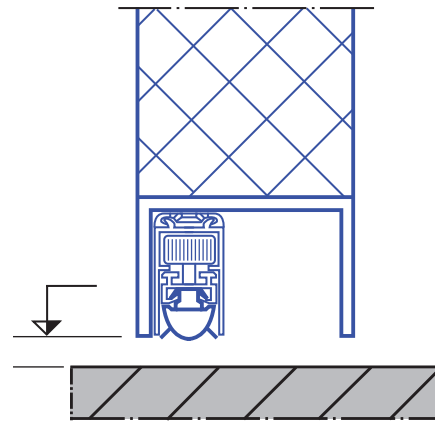
*Anchor in the headpiece only for widths > 1360 mm

Sills

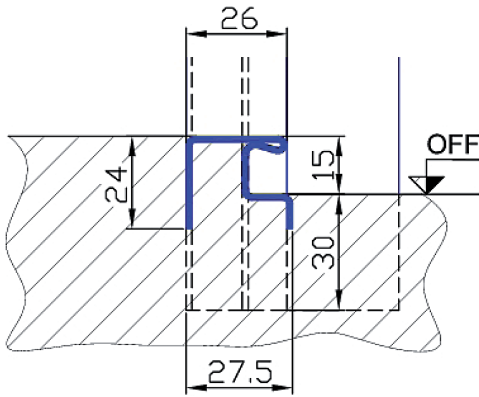
Doors can be shortened in U-profile area



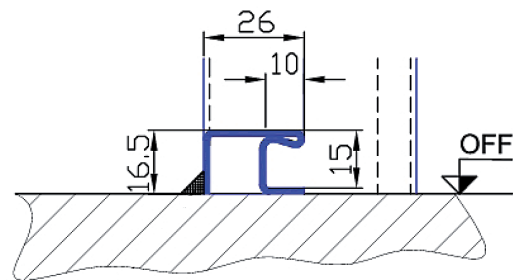
Lowerable floor seal



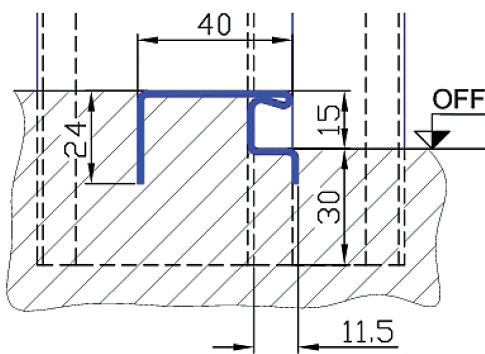
BE-1 sill for corner frames with floor recess



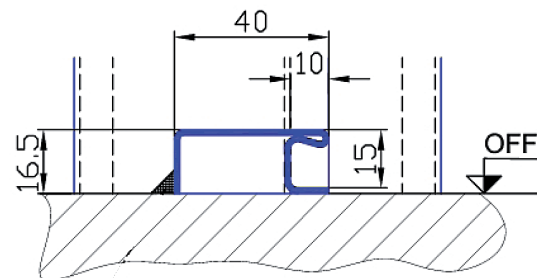
BE-2 sill for corner frames without floor recess



BU-1 sill for wrap-around frames with floor recess

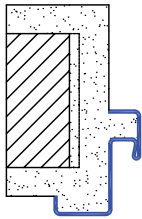


BU-2 sill for wrap-around frames without floor recess

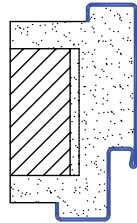


A selection of your options ...

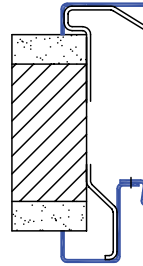
Standard profiles for masonry walls



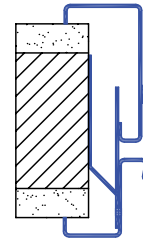
Corner frame



Wrap-around frame

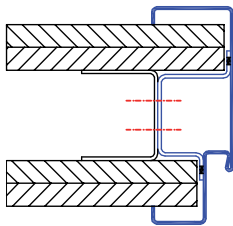


2-part frame for all wall types

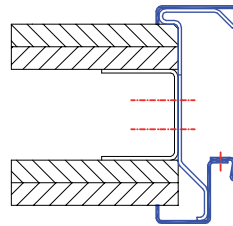


2-part frame with opening width tolerance

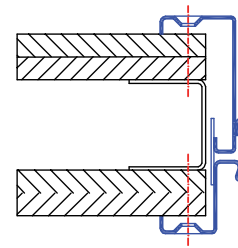
Standard profiles for stud walls



Plasterboard stud wall frame bolted onto stirrup anchors

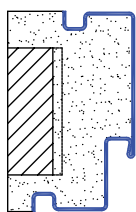


2-part wrap-around frame bolted in the jamb (suitable for all wall types)

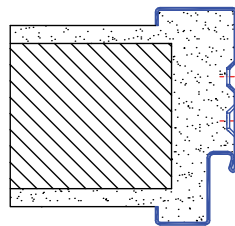


2-part wrap-around frame with opening width tolerance, bolted through the frame facing

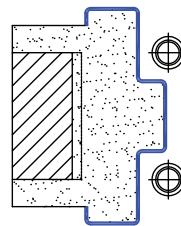
Further solutions



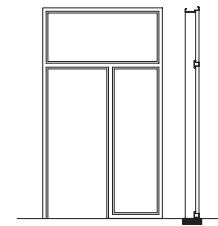
Wrap-around frame with shade groove



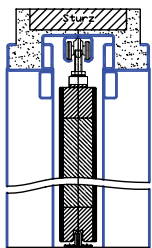
Wrap-around frame with dowel hole punched in the jamb



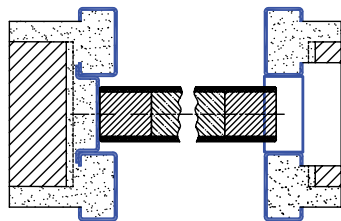
Swing door frame



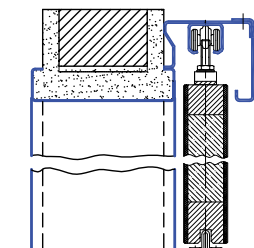
Steel frame with fixed transom window and side part



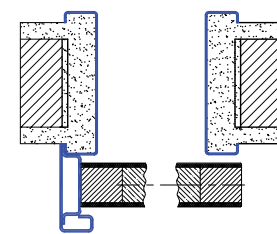
Sliding door frame, running in the wall (vertical section)



Sliding door frame, running in the wall (horizontal section)



Sliding door frame, running in front of the wall (vertical section)



Sliding door frame, running in front of the wall (horizontal section)

Perfect frame design

Flat steel frame for insulation glazing

or

Glass holding strips made of aluminium

or

Galvanized glass holding strips

Connecting corners made of stainless steel

Optional preparation for magnetic contact

Optional preparation for closer with slide channel technology:

Hinged bracket mechanism or inside door closer

Optional frame geometries:

Butted or rebated

Optional preparations in the lock hole area:

Electric opener

Assortment of closing edge plates

Stainless steel closing edge plate

Lock hole reinforcement

Multiple locking system

Latch adjustment

Optional modern frame facing contours:

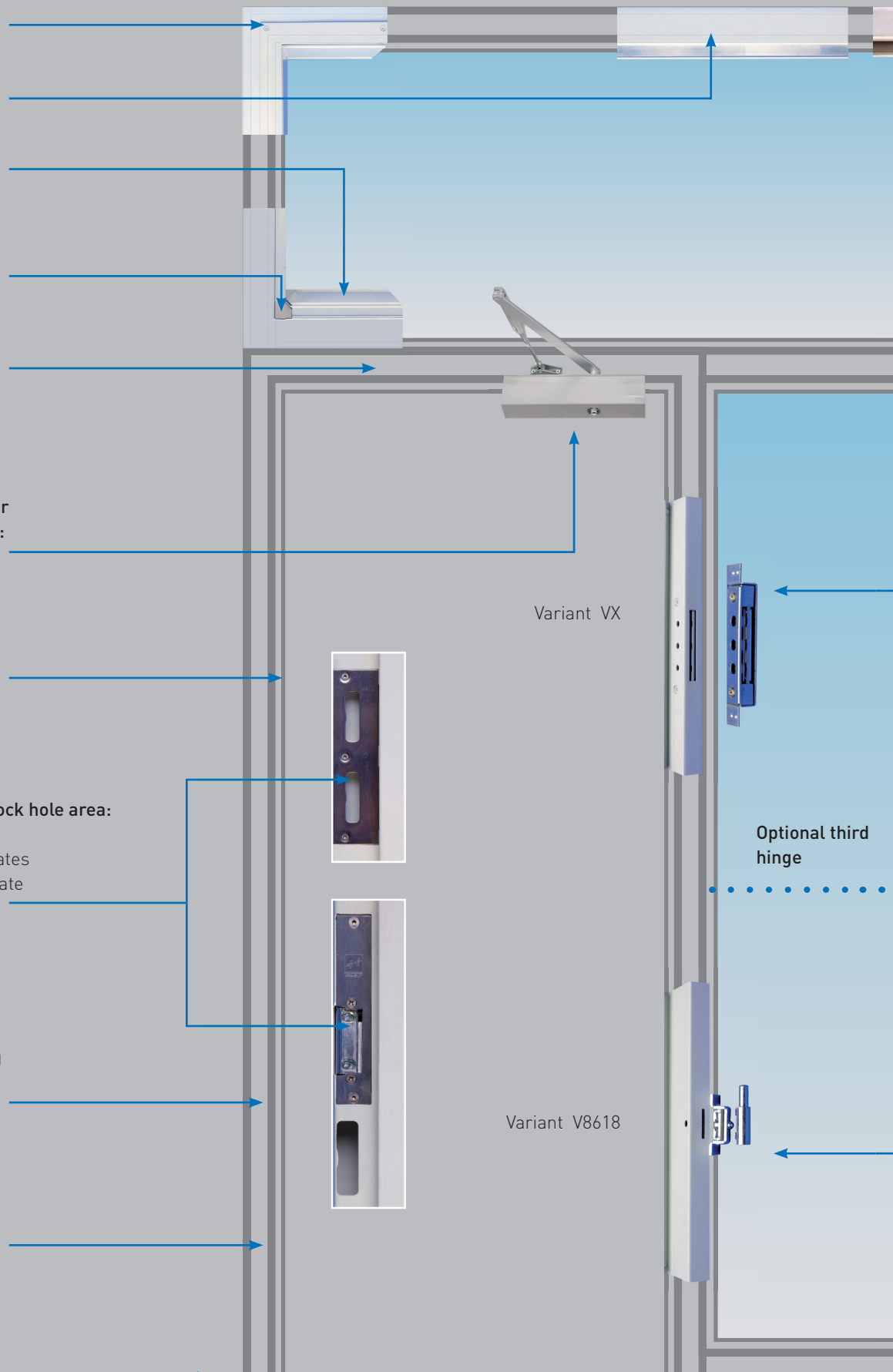
Shade groove

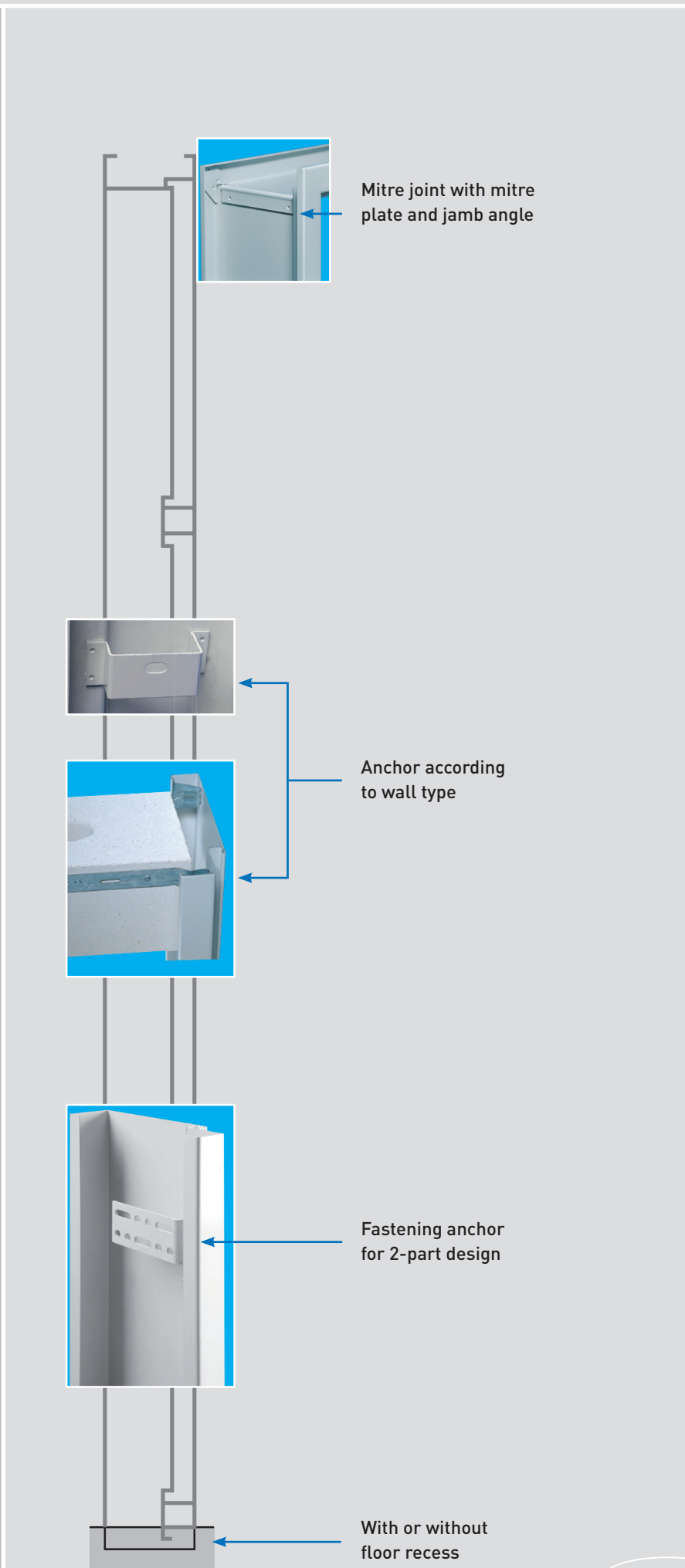
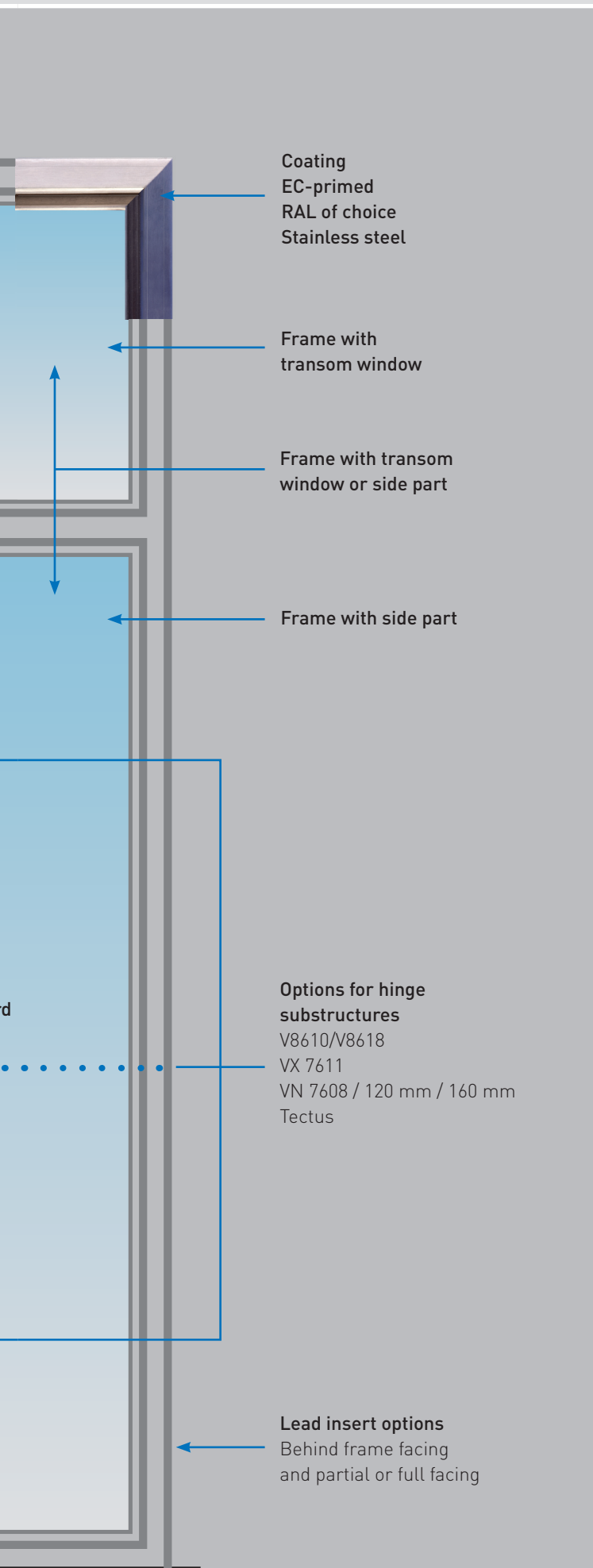
Radius

or without fold, etc.

Frame facing width extension possible

Various floor sills possible





Further details can be found in our catalogues:



Order a catalogue free of charge by calling +49 (0) 28 50 910-0 or sending an e-mail to sales@novoferm.com.

Or simply leaf through our catalogues online at your convenience: www.novoferm.com.

Novoferm. On-site. Direct. Europe-wide.

Novoferm Group is one of Europe's leading system suppliers of doors, garage doors, frames and operators. We offer a large range of products and services for private, commercial and industrial applications. All our products are manufactured to the highest quality standards and reflect best engineering practice. We combine maximum functionality with innovative design. We manufacture our products in various international locations and with our Europe-wide network we are always available to help you – wherever you are!

Your Novoferm sales partner

Novoferm GmbH
Schüttensteiner Str. 26
D-46419 Isselburg
Tel.: (0 28 50) 9 10-0
Fax: (0 28 50) 9 10-6 50
E-Mail: sales@novoferm.com
www.novoferm.com

